

Jamestown Child Care Needs Assessment



Jamestown Child Care Needs Assessment Survey Results

Survey Completion Date: January 25, 2008 to February 18, 2008

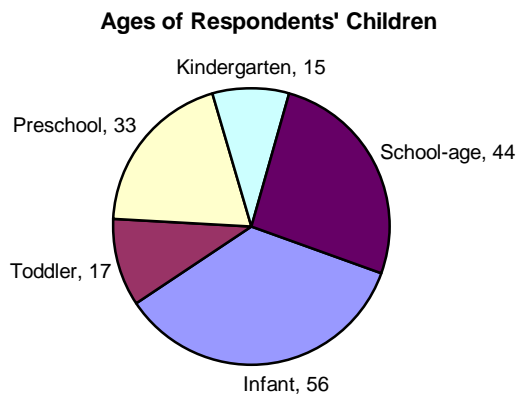
	Number of Response(s)	Response Ratio
1. How many children in your family are infants? (Newborn up to the age of 2 yrs)		
0	42	42%
1	50	50%
2	3	3%
3 or more	0	0%
No Responses	4	4%
Total	99	100%

2. How many children in your family are toddlers? (2 yrs. up to 3 yrs.)		
0	75	75%
1	17	17%
2	0	0%
3 or more	0	0%
No Responses	7	7%
Total	99	100%

3. How many children in your family are preschoolers? (3 yrs. up to 5 years)		
0	60	60%
1	31	31%
2	1	1%
3 or more	0	0%
No Responses	7	7%
Total	99	100%

4. How many children in your family are kindergartners? (5-6 yrs)		
0	73	73%
1	15	15%
2	0	0%
3 or more	0	0%
No Responses	11	11%
Total	99	100%

5. How many children in your family are elementary school-age children? (6 yrs. to 12 yrs.)		
0	55	55%
1	28	28%
2	8	8%
3 or more	0	0%
No Responses	8	8%
Total	99	100%



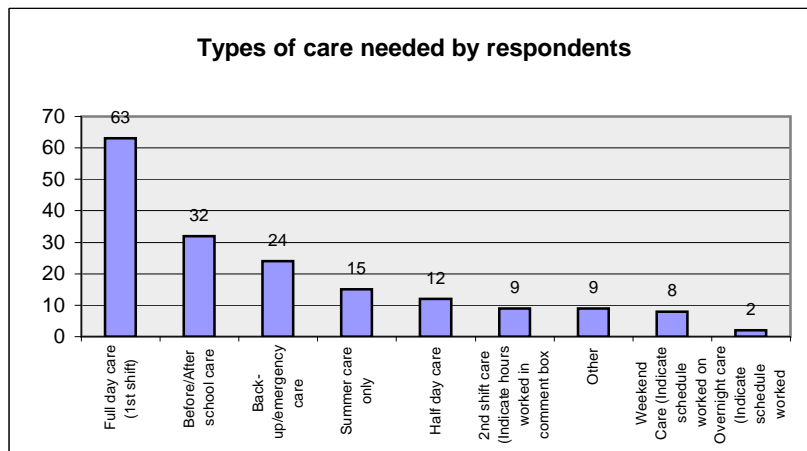
Jamestown Child Care Needs Assessment Survey Results

Survey Completion Date: January 25, 2008 to February 18, 2008

	Number of Response(s)	Response Ratio
6. Over the last 12 months, have you used child care for any children in your care?		
Yes	82	82%
No	12	12%
No Responses	5	5%
Total	99	100%

7. Do you anticipate needing child care in the next 12 months?		
Yes	87	87%
No	8	8%
No Responses	4	4%
Total	99	100%

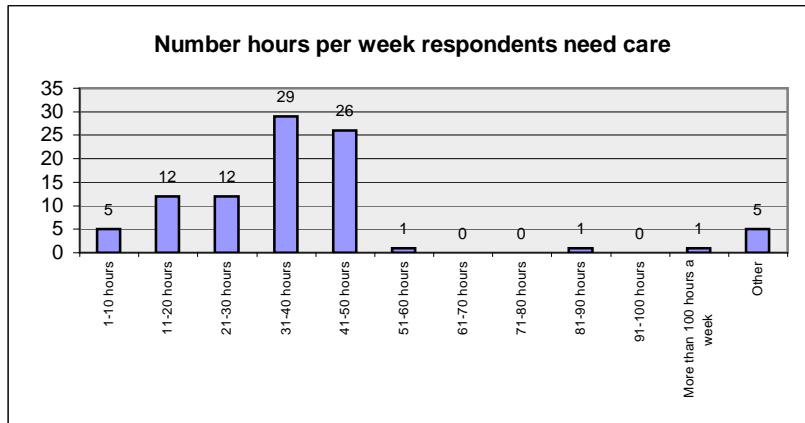
8. Please check the types of child care needed by children in your care over the past 12 months		
Full day care (1st shift)	63	36%
Before/After school care	32	18%
Back-up/emergency care	24	13%
Summer care only	15	8%
Half day care	12	6%
2nd shift care (Indicate hours worked in comment box below)	9	5%
Other	9	5%
Weekend Care (Indicate schedule worked on weekends in comment box below)	8	4%
Overnight care (Indicate schedule worked overnight in comment box below)	2	1%
Total	174	100%



Jamestown Child Care Needs Assessment Survey Results

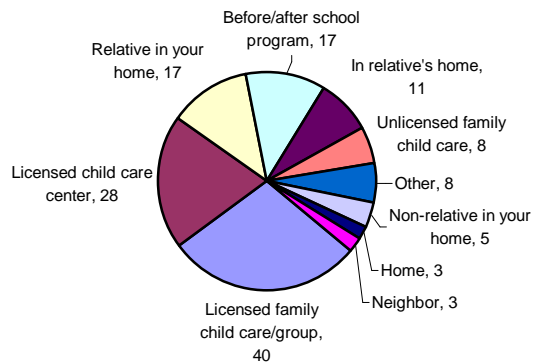
Survey Completion Date: January 25, 2008 to February 18, 2008

	Number of Response(s)	Response Ratio
9. Considering the child in your family who uses care the most, how many hours per week do you use/need child care for that child?		
1-10 hours	5	5%
11-20 hours	12	13%
21-30 hours	12	13%
31-40 hours	29	31%
41-50 hours	26	28%
51-60 hours	1	1%
61-70 hours	0	0%
71-80 hours	0	0%
81-90 hours	1	1%
91-100 hours	0	0%
More than 100 hours a week	1	1%
Other	5	5%
Total	92	100%



10. Please tell us how care is/was provided for your children while you work. Check all that apply.		
Licensed family child care/group	40	28%
Licensed child care center	28	20%
Relative in your home	17	12%
Before/after school program	17	12%
In relative's home	11	7%
Unlicensed family child care	8	5%
Other	8	5%
Non-relative in your home	5	3%
Home	3	2%
Neighbor	3	2%
Total	140	100%

Type of care currently used by respondents

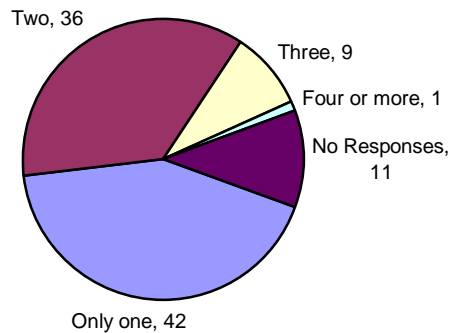


Jamestown Child Care Needs Assessment Survey Results

Survey Completion Date: January 25, 2008 to February 18, 2008

	Number of Response(s)	Response Ratio
11. How many different types of child care arrangements do you use each week for children in your care? (For example, using a neighbor down the street plus a child care center)		
Only one	42	42%
Two	36	36%
Three	9	9%
Four or more	1	1%
No Responses	11	11%
Total	99	100%

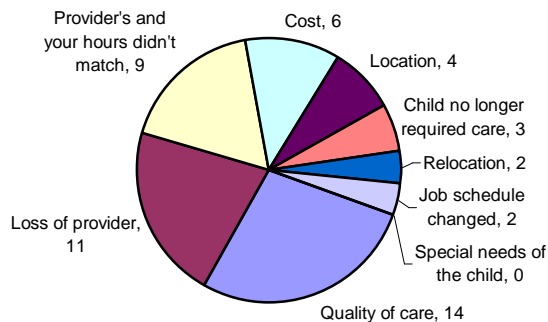
Number of different child care arrangements



12. How many times have you changed child care programs in the past year?		
None	68	74%
1	19	20%
2	1	1%
3	2	2%
4 or more	1	1%
Total	91	100%

13. What were the reasons for the changes (mark all that apply)?		
Quality of care	14	27%
Loss of provider	11	21%
Provider's and your hours didn't match	9	17%
Cost	6	11%
Location	4	7%
Child no longer required care	3	5%
Relocation	2	3%
Job schedule changed	2	3%
Special needs of the child	0	0%
Total	51	100%

Reasons respondents changed child care



Jamestown Child Care Needs Assessment Survey Results

Survey Completion Date: January 25, 2008 to February 18, 2008

	Number of Response(s)	Response Ratio
14. Do you have reliable back-up child care when your regular care is unavailable?		
Always	8	9%
Most of the time	25	28%
Sometimes	16	18%
Rarely	23	26%
Never	16	18%
Total	88	100%

15. How many times have your child care arrangements fallen through in the past 6 months?		
None	26	29%
1-3	54	61%
4-7	6	6%
8-11	1	1%
12 or more	1	1%
Total	88	100%

16. What do you do in situations in which your child care arrangements fall through? Please mark all that apply.		
You or a family member stayed home	62	45%
Left work early/came to work late	38	28%
Found someone to care for children	28	20%
Brought child to work	5	3%
Other	2	1%
Total	135	100%

17. In the past 6 months, as a result of a child care dilemma, estimate how many days you have missed work.		
none	31	31%
1-2	36	36%
3-4	15	15%
5-6	4	4%
7 or more	2	2%
No Responses	11	11%
Total	99	100%

18. In the past 6 months, as a result of a child care dilemma, estimate how many days you have been late to work.		
none	40	40%
1-2	36	36%
3-4	5	5%
5-6	4	4%
7 or more	4	4%
No Responses	10	10%
Total	99	100%

Jamestown Child Care Needs Assessment Survey Results

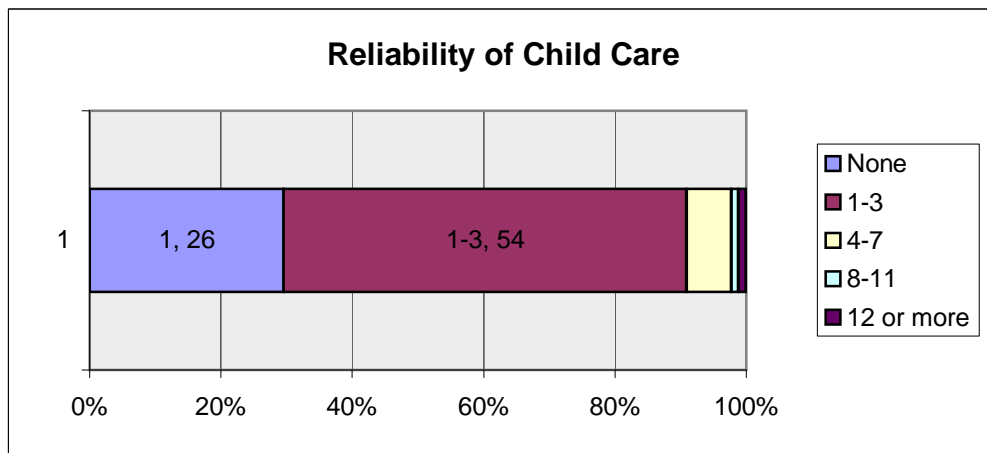
Survey Completion Date: January 25, 2008 to February 18, 2008

	Number of Response(s)	Response Ratio
19. In the past 6 months, as a result of a child care dilemma, estimate the number of times that you left work early.		
none	32	32%
1-2	32	32%
3-4	15	15%
5-6	3	3%
7 or more	6	6%
No Responses	11	11%
Total	99	100%

20. In the past 6 months, as a result of a child care issue, estimate the number of times each week you are contacted at work with child care concerns.		
none	45	45%
1-2	28	28%
3-4	11	11%
5 or more	5	5%
No Responses	10	10%
Total	99	100%

21. When absent from work to handle child care situations, which types of leave did you take?		
Vacation	34	30%
Paid sick	32	28%
Personal	17	15%
Time without pay	13	11%
Other	7	6%
Unpaid sick	6	5%
FMLA	2	1%
Total	111	100%

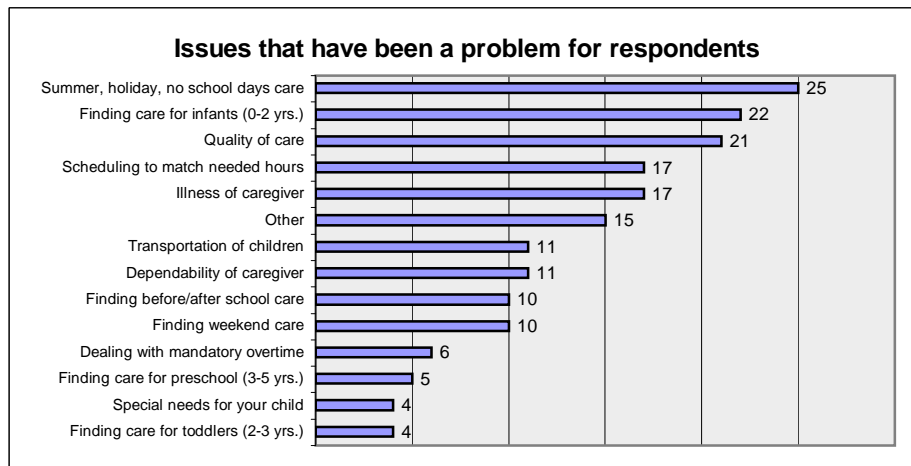
22. Listed below are a number of ways that businesses can help employees with child care issues. Check the options that would be helpful for you:		
Flex time (adjusted arrival and departure times to meet	51	29%
Allowed to use paid sick leave to care for sick children	48	27%
Funding to increase the quality and/or expand my current	42	24%
Spaces reserved in a child care center or home for	34	19%
Total	175	100%



Jamestown Child Care Needs Assessment Survey Results

Survey Completion Date: January 25, 2008 to February 18, 2008

	Number of Response(s)	Response Ratio
23. Check any issues that have been a problem for you during the past year: (Check all that apply)		
Summer, holiday, no school days care	25	14%
Finding care for infants (0-2 yrs.)	22	12%
Quality of care	21	11%
Scheduling to match needed hours	17	9%
Illness of caregiver	17	9%
Other	15	8%
Transportation of children	11	6%
Dependability of caregiver	11	6%
Finding before/after school care	10	5%
Finding weekend care	10	5%
Dealing with mandatory overtime	6	3%
Finding care for preschool (3-5 yrs.)	5	2%
Special needs for your child	4	2%
Finding care for toddlers (2-3 yrs.)	4	2%
Total	178	100%



Jamestown Child Care Needs Assessment Survey Results

Survey Completion Date: January 25, 2008 to February 18, 2008

25. Place of employment indicated by respondents	Number of Response(s)	Response Ratio
North Dakota State Hospital	27	
Jamestown Public Schools	15	
James River Correctional Center	5	
Jamestown College	5	
Unison Bank	5	
First Community Credit Union	4	
South Central Human Service Center	3	
Clinic/Healthcare Facility	2	
Community Options, Inc.	2	
Kmart	2	
National Buffalo Museum	2	
Pingree-Buchanan School District	2	
Roosevelt School / Continental Bistro / Brass Rail	2	
Two Rivers Broadcasting	2	
Alternative Billing Solutions/Carecentric	1	
BNSF Logistics	1	
Brown Wilbert	1	
Dynamics Mktg.	1	
Financial Institution	1	
Goodrich	1	
Government	1	
Jamestown Middle School	1	
Newman Signs	1	
Public Agency	1	
Quiznos	1	
Stutsman County Highway Dept	1	
Thrivent	1	
Vanity	1	